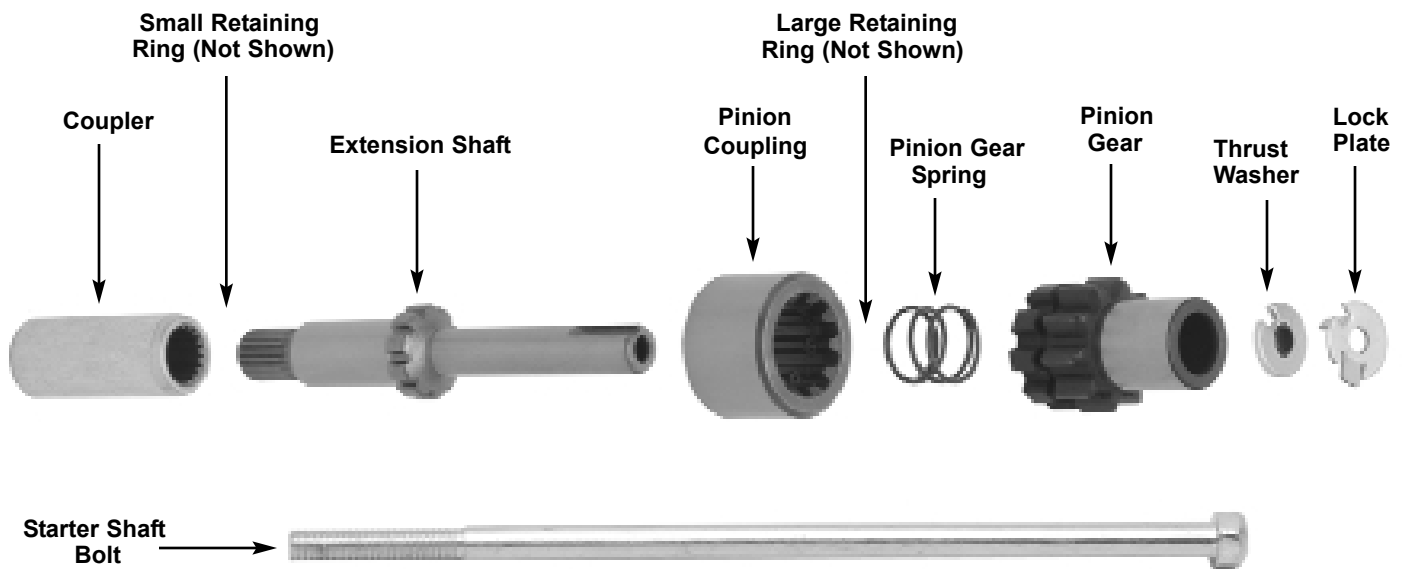


STARTER MOTOR JACKSHAFT ASSEMBLIES

NOTE: Prior to starting any work on the motorcycle, make certain that you disconnect both battery cables !

These starter jackshaft extension assemblies are designed for use on electric start models utilizing stock or stock-style primary covers. They are manufactured from choice grade materials and available for 1989-1993 models which utilize a 9-tooth pinion gear mating to a 66-tooth starter ring gear, or a 10-tooth pinion gear for use with a 102-tooth starter ring gear, as used on 1994-up models.

Each kit includes all necessary component pieces, including the starter shaft bolt, lock tab, thrust washer, pinion gear, pinion gear spring, retaining rings, pinion coupling, extension shaft and coupler.



PP-SSA-93 . . Complete Starter Extension Assembly for 1989-1993 Models with a 66-tooth Ring Gear
(Note: Supplied w/9-tooth pinion gear & coarse thread starter shaft bolt)

PP-SSA-94 . . Complete Starter Extension Assembly for 1994-Up Models with a 102-tooth Ring Gear
(Note: Supplied w/10-tooth pinion gear & fine thread starter shaft bolt)

RIVERA PRIMO INC. 12450 WHITTIER BLVD. WHITTIER, CALIFORNIA 90602
ORDERS: 800-872-1515 TEL: 562-907-2600 FAX: 562-907-2606 www.riveraprimo.com